

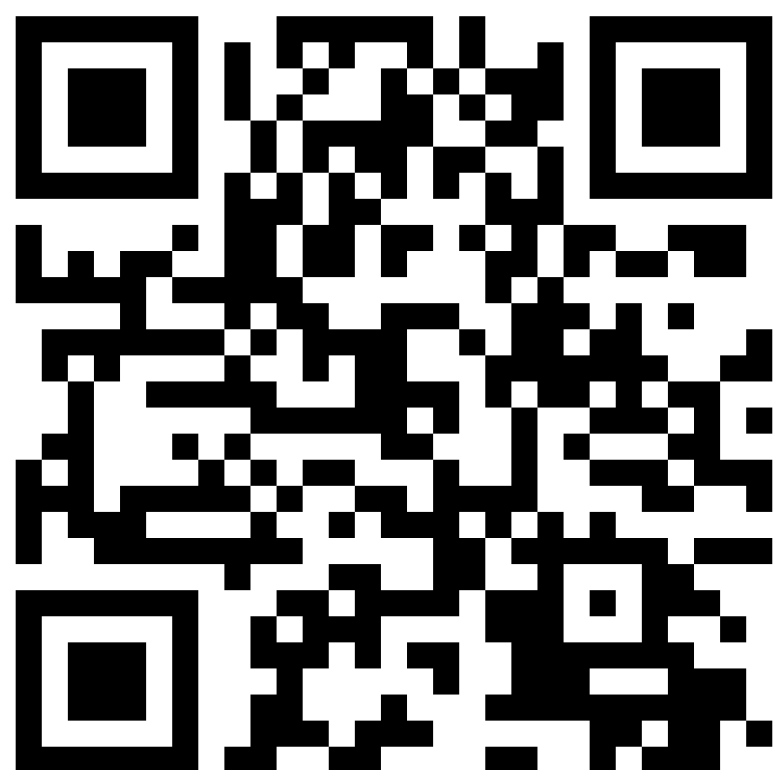


AUDITION PACKET

2026 – 2027 Season

BRASS

SIGN UP LINK



<https://signup.com/go/vfaAPxq>



AUDITION INSTRUCTIONS

All brass musicians interested in auditioning SYO Ensembles will complete three short audition components:

1. Prepared solo excerpt (up to 2 minutes)
2. Two major scales (student-selected key; faculty-selected key)
3. Sight-reading (faculty-selected excerpt, provided at the audition)

ARRIVAL INSTRUCTIONS

Arrive at least 10 minutes before your appointed audition time to tune and warm up beforehand. You will be escorted into the audition space when it is your turn. Bring ALL music with you.

AUDITION EVALUATION AND RESULTS

Your audition determines your ensemble placement. Auditions are evaluated using a common scoring rubric across five performance factors: Articulation/Tone, Intonation, Rhythm/Tempo, and Interpretation/Musical Effect. These factors are assessed across all three audition components to support consistent and transparent evaluation.

*Ensemble announcements will be determined by the Music Director and sent within two weeks of auditions.

**FOR MORE INFORMATION,
PLEASE CONTACT:**

Dr. Thomas Roggio

Music Director, Sinfonia Youth Orchestras
Coordinator of Education & Community Engagement
E: troggio@sinfoniagulfcoast.org

AUDITION MATERIALS

1. Prepared Solo Excerpt (max. 2 minutes)

Select a piece that best showcases your current playing. You have full autonomy over your repertoire choice— there is no required piece or method book. Choose something you can prepare well and are comfortable playing.

You may play:

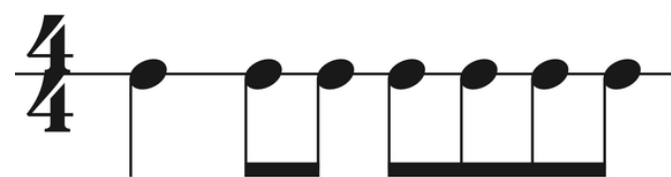
- A piece from a Suzuki book
- A solo from a method book (Essential Elements, Measures of Success, etc.)
- The beginning (or a short section) of a sonata or concerto movement
- A piece assigned by your private teacher or school orchestra direction

2. Scales

All students will play two major scales from the two levels below. Woodwind players in 6th, 7th, and 8th grade will prepare the Intermediate Symphony Orchestra scale requirements. Students in 9th-12th grade will prepare scales from the Advanced Symphony Orchestra scale requirements.

During the audition, you will announce which level you are auditioning with and choose one scale from the level of choice to play. Adjudicators will then choose one additional key from the list for your selected level.

Scales for all levels should be played with the following rhythm:
Approximate tempo: Quarter note = 120



INTERMEDIATE SYMPHONY SCALES

Trumpet (1 octave): A major (Concert G); D major (Concert C); C major (Concert Bb); Chromatic two octaves from concert G

Horn (1 octave): D major (Concert G); C major (Concert F); F major (Concert Bb); Chromatic 1 ½ octaves from G

Trombone (1 octave): G major; C major; B-flat major; Chromatic 2 octaves from F

Tuba (1 octave): G major; C major; B-flat major; Chromatic 2 octaves from F

ADVANCED SYMPHONY SCALES

Trumpet (1 octave): B-flat Major (Concert Ab); D-flat Major (Concert B); E major (Concert D); Chromatic two octaves from C

Horn (1 octave): E-flat Major (Concert Ab); B major (Concert E); A major (Concert D); Chromatic two octaves from F

Trombone (1 octave): A-flat Major; D major; E major; E-flat major; Chromatic two octaves from Bb

Tuba: A-flat major; D major; E major; E-flat major; Chromatic two octaves from Bb

3. Sight-Reading

Each student will sight-read a brief excerpt during the audition. You will not see the music beforehand. The faculty will select the sight-reading excerpt during the audition to match the student's current level. We assess reading accuracy, steady pulse, and adaptability in real time.

Accommodations

SYO is committed to providing an acces

sible and supportive audition experience for all students. If your child needs accommodations for the audition process, please contact us in advance so we can work together to ensure a positive experience.